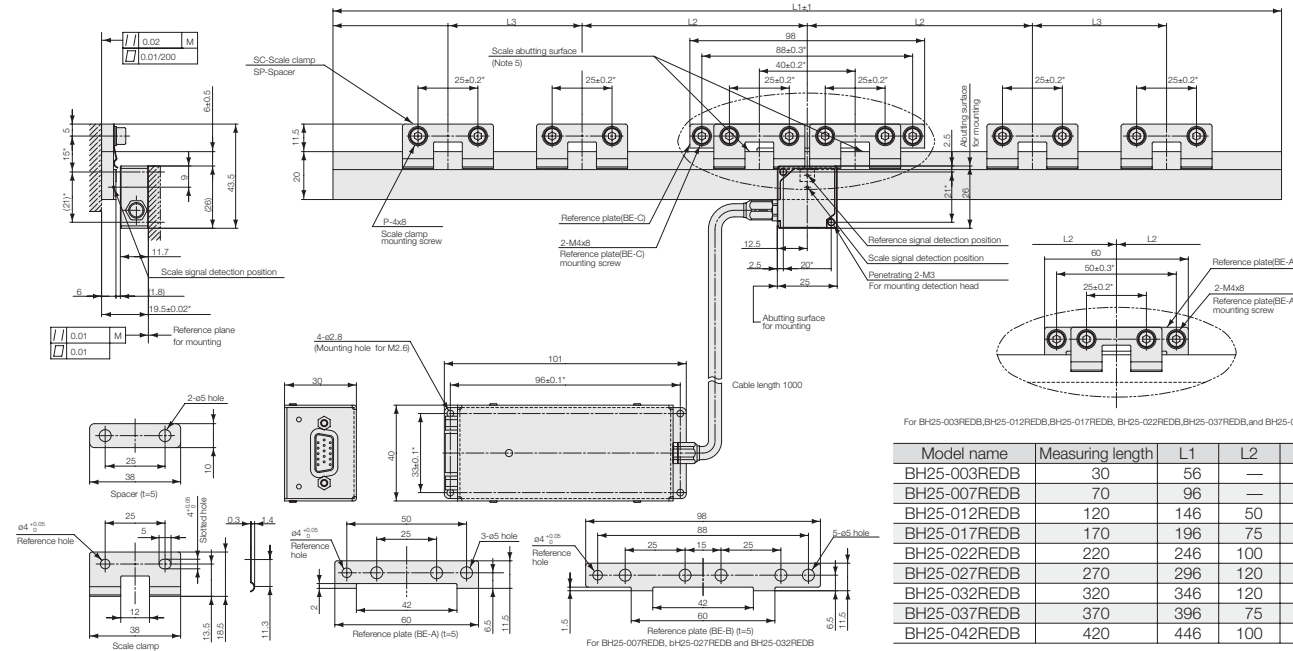


● BH25-RED BH25-***REDB

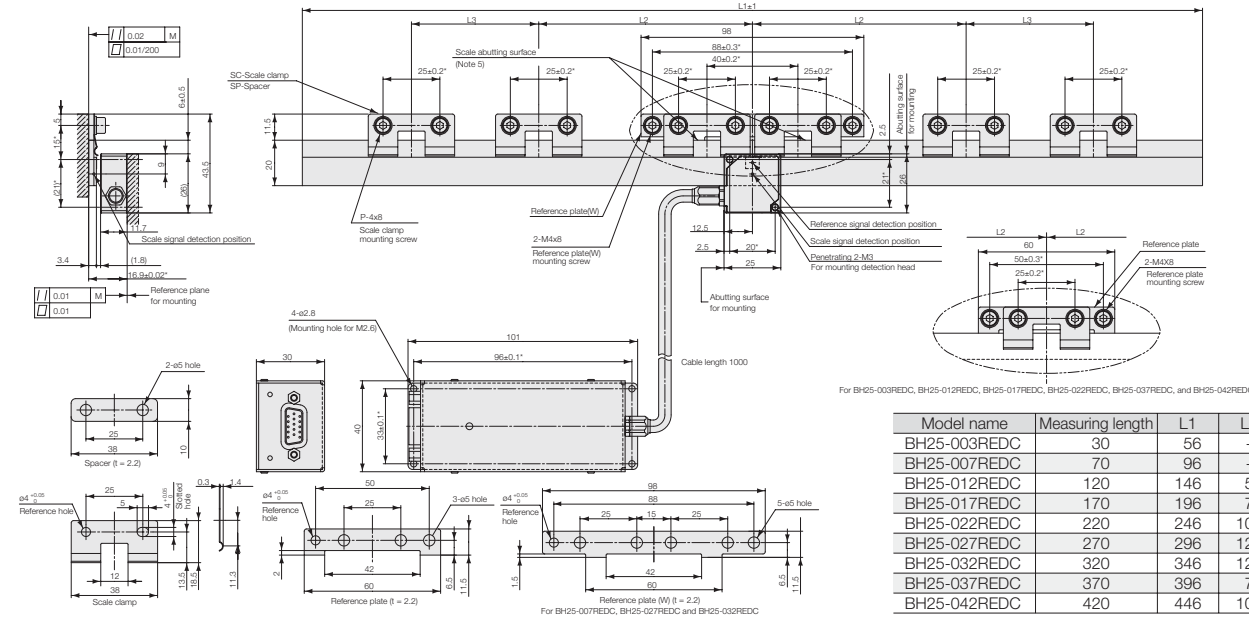


For BH25-003REDB, BH25-012REDB, BH25-017REDB, BH25-022REDB, BH25-032REDB, and BH25-042REDB

Model name	Measuring length	L1	L2	L3	SC	SP	P
BH25-003REDB	30	56	—	—	1	—	2
BH25-007REDB	70	96	—	—	2	—	4
BH25-012REDB	120	146	50	—	3	2	6
BH25-017REDB	170	196	75	—	3	2	6
BH25-022REDB	220	246	100	—	3	2	6
BH25-027REDB	270	296	120	—	4	2	8
BH25-032REDB	320	346	120	—	4	2	8
BH25-037REDB	370	396	75	75	5	4	10
BH25-042REDB	420	446	100	100	5	4	10

Notes: 1. The items marked by an asterisk indicate the machining dimensions on the mounting surface. 2. The surface roughness of the scale mounting surface is $R_{max} = 6.3S(250\mu\text{inch})$. 3. The surface roughness of the detector head mounting surface is $R_{max} = 6.3S(250\mu\text{inch})$. 4. *M* refers to the machine guide. 5. Mount and adjust the paired reference plates so that their reference surfaces have a parallelism of 0.01 or less with respect to the machine guide.

● BH25-RED BH25-***REDC



For BH25-003REDC, BH25-012REDC, BH25-017REDC, BH25-022REDC, BH25-032REDC, and BH25-042REDC

Model name	Measuring length	L1	L2	L3	SC	SP	P
BH25-003REDC	30	56	—	—	1	—	2
BH25-007REDC	70	96	—	—	2	—	4
BH25-012REDC	120	146	50	—	3	2	6
BH25-017REDC	170	196	75	—	3	2	6
BH25-022REDC	220	246	100	—	3	2	6
BH25-027REDC	270	296	120	—	4	2	8
BH25-032REDC	320	346	120	—	4	2	8
BH25-037REDC	370	396	75	75	5	4	10
BH25-042REDC	420	446	100	100	5	4	10

Notes: 1. The items marked by an asterisk indicate the machining dimensions on the mounting surface. 2. The surface roughness of the scale mounting surface is $R_{max} = 6.3S(250\mu\text{inch})$. 3. The surface roughness of the detector head mounting surface is $R_{max} = 6.3S(250\mu\text{inch})$. 4. *M* refers to the machine guide. 5. Mount and adjust the paired reference plates so that their reference surfaces have a parallelism of 0.01 or less with respect to the machine guide.